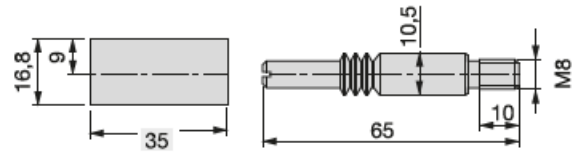
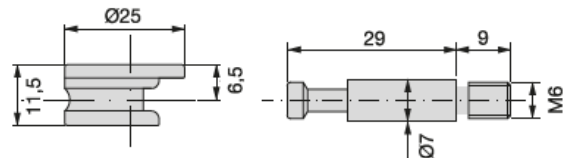


GIUNZIONI—MINUTERIA

ART. 5072301 GIUNZIONE D. 35 SET



ART. 615 GIUNZIONE D. 25 SET

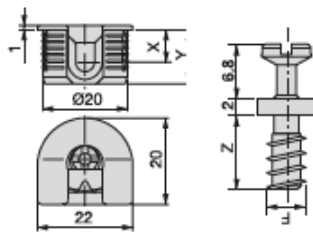


GIUNZIONI FIX 20

ART.	X	Y	SP.
8070907	9,5	14,5	19

TIRANTI

ART.	Z	F	
8905305	11	D.6	
8057005	9	M6	

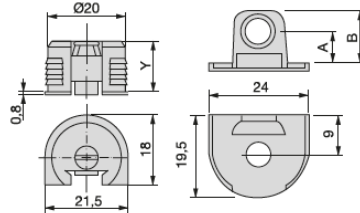


GIUNZIONE UNIBLOCK D.20

ART.	Y	SP.	
8175121	13	16-19	

STAFFA PER UNIBLOCK

ART.	A	B	SP.
8175907	9,5	14	19

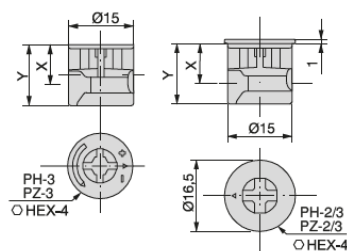


GIUNZIONI ECCENTRICI 15 S/BORDO

ART.	X	Y	SP.
8006905	9,5	14	19

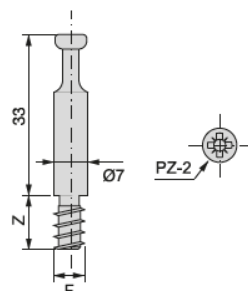
GIUNZIONI ECCENTRICI 15 C/BORDO

ART.	A	B	SP.
8007005	9	14	18
8058805	11	16	22

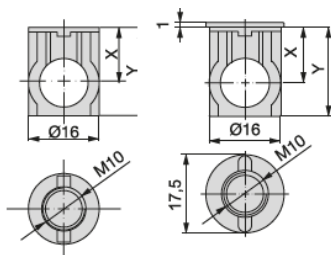


TIRANTE PIENO

ART.	Z	F	
5137905	8	M6	



GIUNZIONI SYSTEM 16

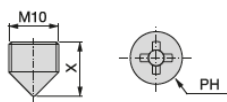


BARILOTTI ZAMA D.16 S/BORDO

ART.	X	Y	SP
8033805	12,5	20	25

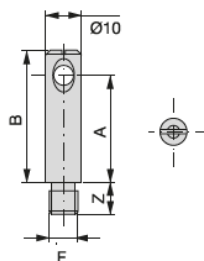
BARILOTTI ZAMA D.16 C/BORDO

ART.	X	Y	SP
8033605	12,5	20	25



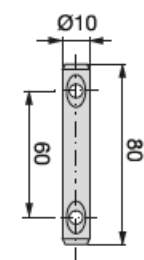
VITI A CONO

ART.	X	SP	INSERTO
8209805	13	25	PH2
8069305	12	22	PH3



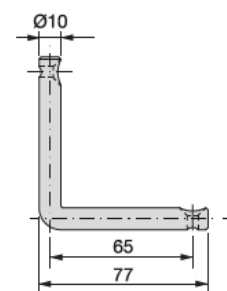
TIRANTI

ART.	A	B	Z	F
8009305	20	27	9	M6
8009105	20	27	10	M8



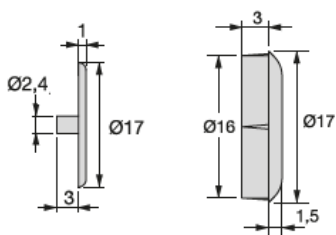
TIRANTI DRITTI DOPPI D.10

ART.				
8009605				



TIRANTI ANGOLARI DOPPI D.10

ART.				
8009505				



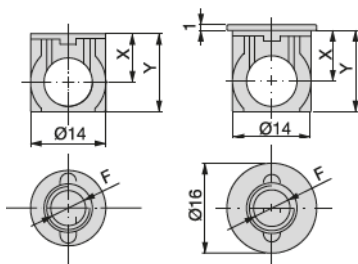
COPRIFORI PER VITI CON PERNO

ART.				
9071915	BIANCO			
9071916	MARRONE			

COPRIFORI PER FORO

9009715	BIANCO
9009716	MARRONE
9009717	NERO

GIUNZIONI SYSTEM 14

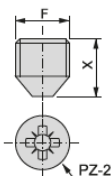


BARILOTTI ZAMA D.14 S/BORDO

ART.	X	Y	SP
8017205	9	14,5	18

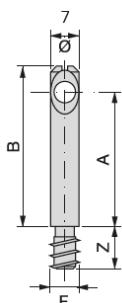
BARILOTTI ZAMA D.14 C/BORDO

ART.	X	Y	SP
8017005	9	14,5	18



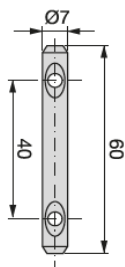
VITI A CONO

ART.	X	SP	F	INSERTO
8146205	8,5	18	8MA	PZ2
8111905	10	22	8MA	PZ2



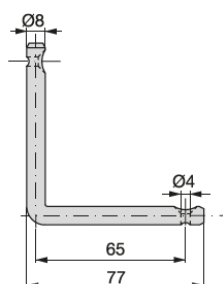
TIRANTI

ART.	A	B	Z	FILETTO
8013005	18,5	26	9	M6
8012705	30	36	9	M6



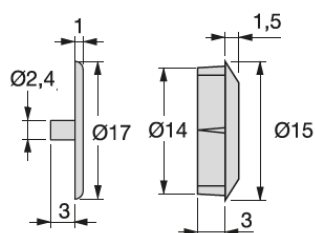
TIRANTI DRITTI DOPPI D.8

ART.				
8410805				



TIRANTI AD ANGOLO DOPPI D.8

ART.				
8009505				



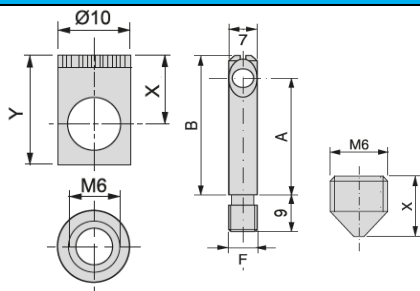
COPRIFORI PER VITI CON PERNO

ART.				
9071915	BIANCO			
9071916	MARRONE			

COPRIFORI PER FORO

9010715	BIANCO			
----------------	--------	--	--	--

GIUNZIONI



BOCCOLE SYSTEM 10

ART.	X	Y	SP
8012505	8	14	16

TIRANTI

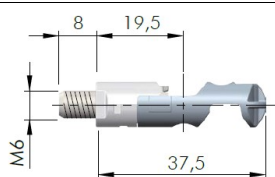
ART.	A	B	FILETTO
8013005	18,5	26	6MA
8012705	30	36	6MA

VITI A CONO

ART.	X	SP	INS
7009009	8	14-16-18-22-26	PH2

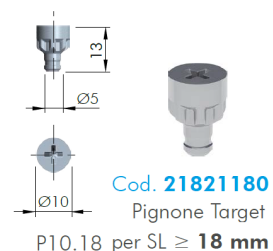


GIUNZIONI TARGHET J10—J12



Cod. **21802160**

Target J10 **M6x8**

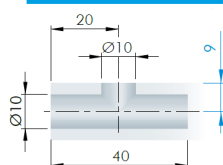


Cod. **21821180**

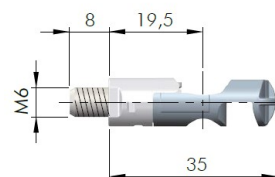
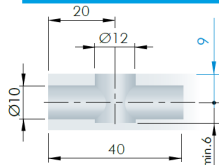
Pignone Target

P10.18 per SL ≥ 18 mm

TARGET J10



TARGET J12



Cod. **21807160**

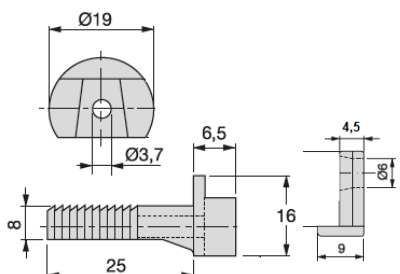
Target J12 **M6x8**



Cod. **21822180**

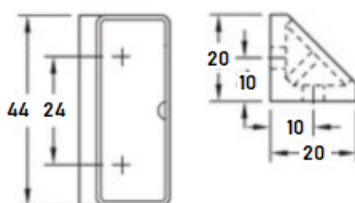
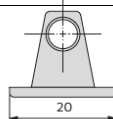
Pignone Target

P12.18 per SL ≥ 18 mm



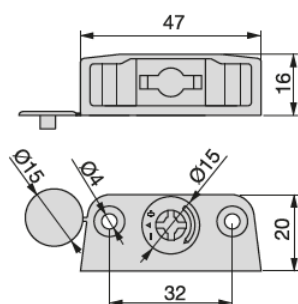
GIUNZIONE INTERPARETE D.10

ART.				
0921				



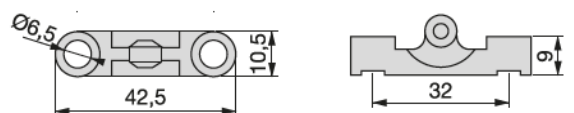
GIUNZIONE AD ANGOLO

ART.				
1763	BIANCO			
1764	MARRONE			

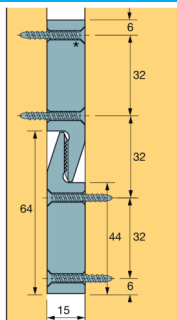


GIUNZIONE AD ANGOLO

ART.				
5031315	BIANCO			
5231320	INCONTRO			

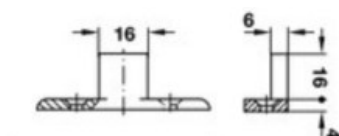


GIUNZIONI



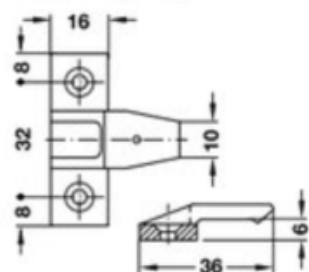
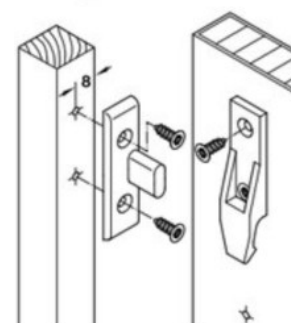
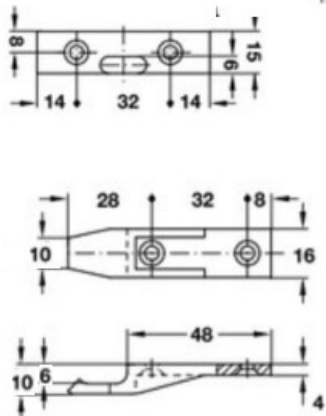
GIUNZIONI MULTI CLIP

46080			
--------------	--	--	--



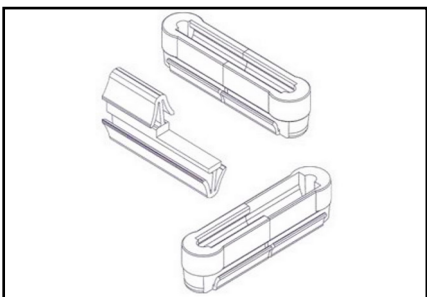
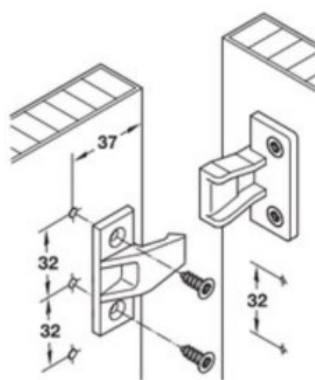
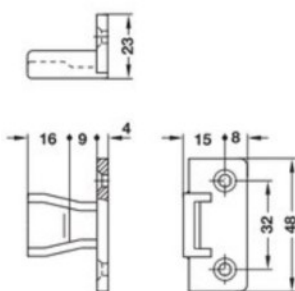
GIUNZIONI KEKU EH

49365	PARTE TELAIO
49356	PARTE PANNELLO



GIUNZIONI KEKU AS

50368	PARTE TELAIO
50359	PARTE PANNELLO

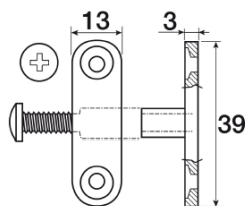


GIUNTI CLIPS OVVO MM 40X12,7

OV0002/1	AGGANCIO REVERSIBILE
-----------------	----------------------

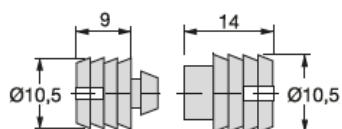


GIUNZIONI-MINUTERIA



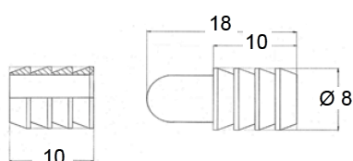
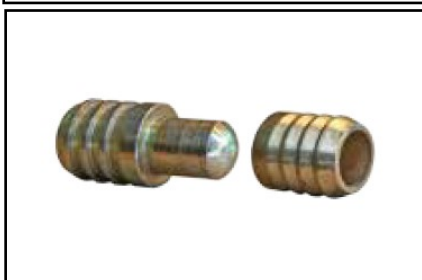
GIUNZIONI IN ZAMA

9018420			
----------------	--	--	--



SPINE A SCATTO IN NYLON

9018420			
----------------	--	--	--



SPINE PER TAVOLI

010298			
---------------	--	--	--



SPINE IN LEGNO

DIAM/LUNGH MM	30	35	40	50	55	60	1000
6	X	X	X	-	-	-	X
8	X	X	X	-	-	X	X
10	X	X	X	X	X	X	X
12	-	-	-	-	-	-	X
14	-	-	-	-	-	-	X
16	-	-	-	-	-	-	X



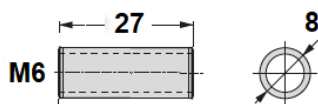
LAMELLE LEGNO SCATOLA PZ 1000

VX008110	MM 10
VX008120	MM 20



VITI FERRO TBL COMBINATA

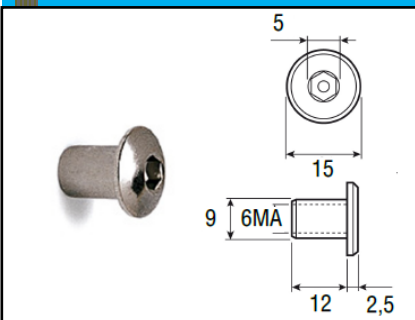
460 NICHELATE	M6X13—M6X25—M6X60
460 BRONZATE	M6X12—M6X25—M6X60



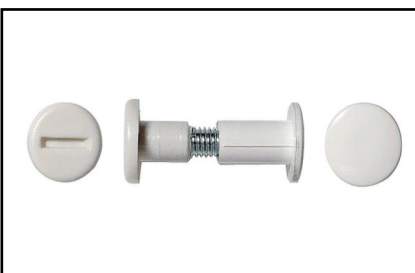
CANOTTI IN ZAMA D. 8

673	M6X27
673	M6X33

MINUTERIA



ART. 213 BORCHIE TB NICHELATE M6

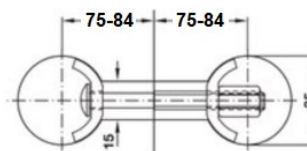


GIUNZIONI PASSANTI NYLON

ART.	A
515	MM 34*44 MM 42*52



ART. 26296220 GIUNTI PER TAVOLI



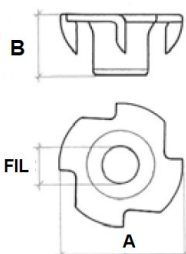
**BARRA FILETTATA MT 1
FERRO ZINCATO CL. 4.8**

M5	M6	M8	M10	M12	M14
----	----	----	-----	-----	-----



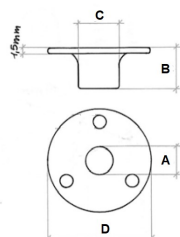
DADI DI CONGIUNZIONE FERRO ZINCATO

ART.	570	571	572	573	574	575
FIL.	M5	M6	M8	M10	M12	M14
ESAG	8X20	10X30	13X30	17X30	19X30	19X30



ART. 261 FONDELLI A 4 PUNTE IN FERRO

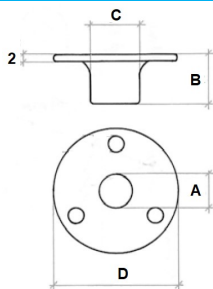
FILETTO	M4	M5	M6	M8	M10
A	17	17	19	22	25
B	7	8	9	11	12



ART. 120 FONDELLI IN FERRO ZINCATO

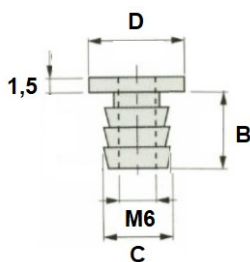
FILETTO	M10				
B	MM 10				
C	MM 14				
D	MM 29				

MINUTERIA



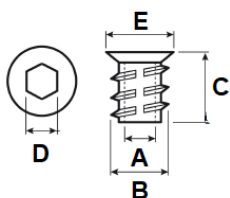
ART. 862 FONDELLI IN OTTONE TORNITO

FILETTO	M12				
B	MM 12				
C	MM 15				
D	MM 30				



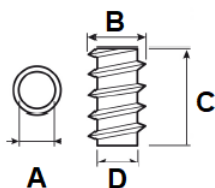
ART.80035 FONDELLI A PRESSIONE IN OTTONE TORNITO

FILETTO	M6				
B	MM 9,5				
C	MM 8,6				
D	MM 12				



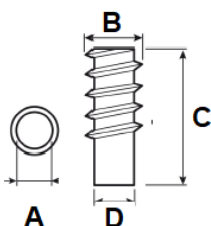
ART 703 BUSSOLE IN ZAMA CON ESAGONO

A	M6	M6	M6	M8	M8	M10
B	9,5	10	10	12	12	14
C	10	13	18	15	20	18
D	6	6	6	8	8	10
E	12	12	12	14	14	16,5



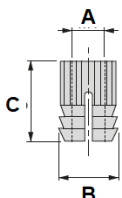
ART. 132 BUSSOLE FILETTATE

A	M4	M5	M6	M6	M8	M8	M8	M10	7/16
B	8	10	10	10	12	12	12	15	12
C	12	12	14	20	14	20	24	18	14
D	5	6,5	7,5	7,5	10	10	10	12	10



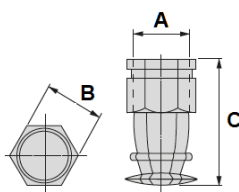
ART. 248 SPINOTTI FILETTATI CON RIBASSO

A	M6	M8	M8	7/16
B	10	10	12	12
C	25	28	30	30
D	8	8	9,5	9,5



ART. 90033 BUSSOLE IN OTTONE AD ESPANSIONE

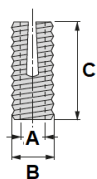
A	M4			
B	5			
C	8			



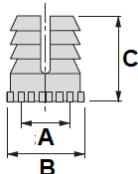
ART. 80082 BUSSOLE IN OTTONE AD ESPANSIONE CON SFERA

A	M6			
B	8			
C	12			

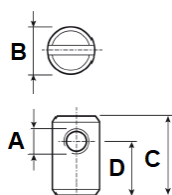
MINUTERIA



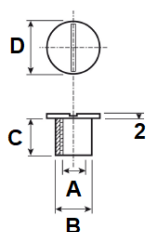
ART. 90036 BUSSOLE NYLON AD ESPANSIONE				
A	D.3			
B	8			
C	11			



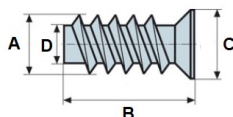
BUSSOLE NYLON				
	ART. 507	ART. 513		
A	M4	M6		
B	8	11		
C	11	11		



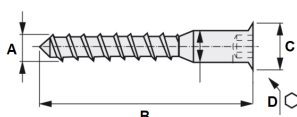
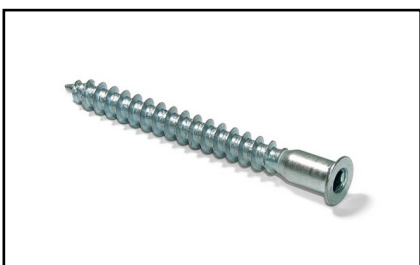
BARILOTTI IN FERRO O ZAMA				
ART.	A	B	C	D
140702	M6	10	14	7-9
260702	M6	12	14	7-9



BORCHIE IN OTTONE				
ART.	A	B	C	D
030104	M6	8	8	12
060104	M8	10	9	14



VITI EURO TSP CL.4.8 ZINCATO				
ART.	A	B	C	D
01315715	6,2	10,5	7,8	4,2
0550006313	6,3	13	7,4	4,2



VITI DA MONTAGGIO CHIAVE ESAGONALE				
ART.	A	B	C	D
7012105	7	50	10	4



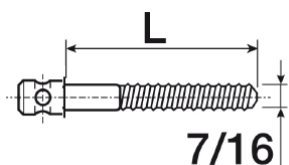
BULLONI TPCE CAVA ESAGONALE FERRO ZINCATO CL10.9													
	20	25	30	35	40	45	50	60	70	80	90	100	120
M5	-	-	X	X	X	X	X	X	-	-	-	-	-
M6	X	X	X	X	X	-	X	X	X	X	-	-	-
M8	X	X	X	-	X	-	X	X	X	X	X	X	X

MINUTERIA



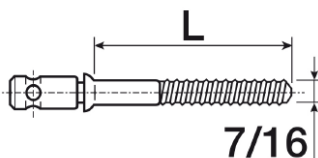
VITI CONGIUNZIONE PASSO METRICO/LEGNO

	25	40	50	60		
M4	X	-	-	-		
M5	-	X	-	-		
M6	-	-	X	-		
M8	-	-	X	-		
M10	-	-	X	X		



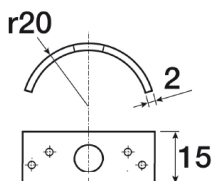
VITI ARMADIO TESTACILINDRICA

FILETTO 7/16	MM 30			
--------------	-------	--	--	--

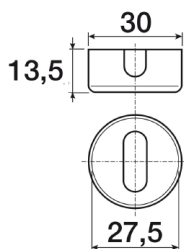


VITI ARMADIO TESTACILINDRICA

FILETTO 7/16	MM 60			
--------------	-------	--	--	--



ART. 106 ARCHETTO FILETTATO 7/16

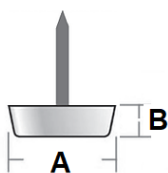


ART. 233 CALOTTE IN FERRO



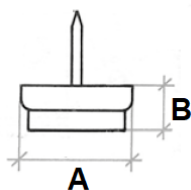
SOTTOSEDIE CON CHIEDO

ARTICOLO	COLORE	A	B
040137	BIANCO	20	6
140137	MARRONE	20	6

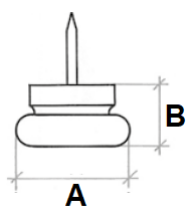


SCIVOLI NYLON/FELTRO CON CHIEDO

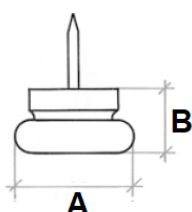
ARTICOLO	COLORE	A	B
020439	MARRONE	22	10
040439	MARRONE	26	10



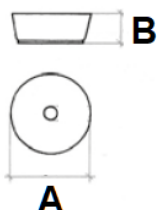
MINUTERIA



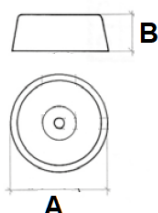
SCIVOLI NYLON CON CHIODO			
ARTICOLO	COLORE	A	B
040185	MARRONE	23	11



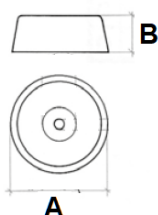
SCIVOLI NYLON CON CHIODO			
ARTICOLO	COLORE	A	B
040185	MARRONE	23	11



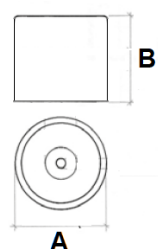
SOTTOSEDIE NYLON CON FORO			
ARTICOLO	COLORE	A	B
040137	BIANCO	20	5
140137	MARRONE	20	5



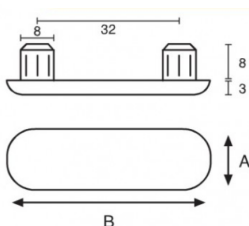
GOMMINI PLASTICA MORBIDA CON FORO			
ARTICOLO	COLORE	A	B
010139	MARRONE	22	8
110139	NERO	22	8



TAPPI PARACOLPI TRONCO CONICI			
ARTICOLO	COLORE	A	B
0142KG25B	GOMMA BIANCA	25	10
0142KG25N	GOMMA NERA	25	10
0142SC25B	PLASTICA BIANCA	30	12
0142SC25N	PLASTICA NERA	30	12

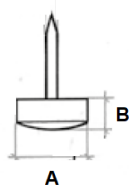


TAPPI PARACOLPI GOMMA CILINDRICI			
ARTICOLO	COLORE	A	B
0143C2525B	BIANCO	25	25
0143C2525N	NERO	25	25



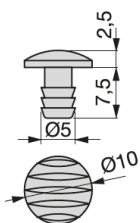
PATTINI CON PERNI			
ARTICOLO	COLORE	A	B
843.8	BIANCO	14,5	47
843.61	MARRONE	14,5	47
943.19	NERO	14,5	47

MINUTERIA



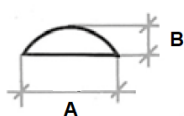
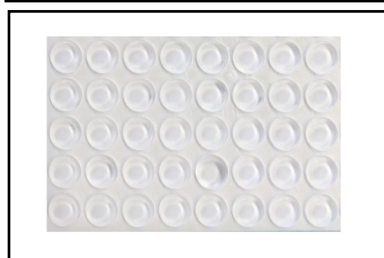
PARACOLPI PLASTICA CON CHIDO

ARTICOLO	COLORE	A	B
010177	BIANCO	8	4
100177	MARRONE	8	4



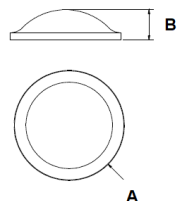
PARACOLPI AD INCASSO NYLON

ARTICOLO	COLORE		
9017320	TRASPARENTE		



PARACOLPI ADESIVI MORBIDI

ARTICOLO	COLORE	A	B
030611	TRASPARENTE	7	1,5
020611	TRASPARENTE	10	1,5
010611	TRASPARENTE	10	3



PARACOLPI BUMPON ADESIVI 3M

ARTICOLO	COLORE	A	B
SJ5302	TRASPARENTE	7,9	2,2
SJ5306	TRASPARENTE	9,5	3,8
SJ5312	TRASPARENTE	12,7	3,5

FELTRINI ADESIVI LANA SPESSORE MM 3 BLISTER COMMERCIALI

ARTICOLO	COLORE	DIMENSIONI
0102UP	BIANCO/MARRONE	D.18-23-25-28-30
0102UP	BIANCO/MARRONE	MM 25X25—90X75

FELTRINI ADESIVI SINTETICI SPESSORE MM 3 ROTOLI INDUSTRIALI

ARTICOLO	COLORE	DIMENSIONI
0981RT	BIANCO/MARRONE	D.16-18-24-28

FELTRO ADESIVO SINTETICO SPESSORE MM 3 VENDITA A METRO

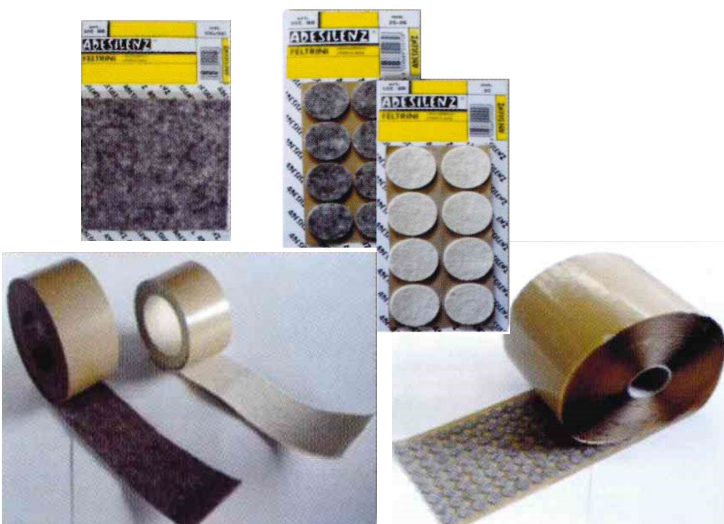
ARTICOLO	COLORE	ALTEZZA MM 250
0981MT	MARRONE	

FELTRO ADESIVO IN LANA SPESSORE MM 8 VENDITA A METRO

ARTICOLO	COLORE	ALTEZZA MM 250
0102MT	BIANCO	

PARACOLPI ADESIVI FELTRO LANA MM 2

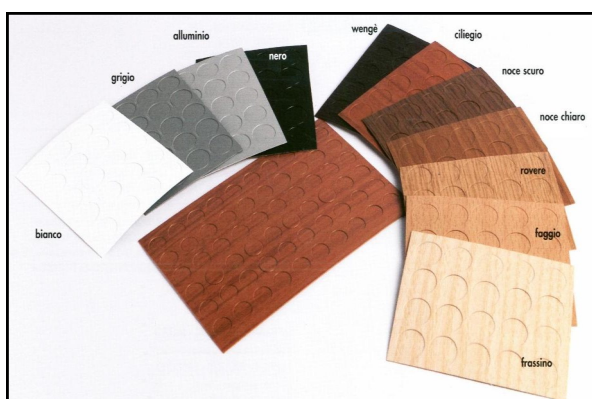
ARTICOLO	COLORE	D. 9
0090PL	BIANCO/MARRONE	



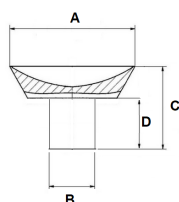
MINUTERIA



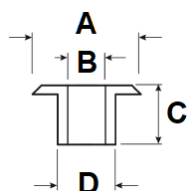
TAPPI COPRIFORO	
FORO DIAMETRO	COLORI
MM 5	BIANCO/MARRONE/NERO
MM 6	BIANCO/MARRONE/NERO
MM 8	BIANCO/MARRONE/NERO
MM 10	BIANCO/MARRONE/NERO
MM 35	BIANCO/MARRONE/NERO



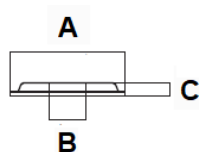
TAPPI COPRIFORO/COPRIVITI ADESIVI DIAMETRI MM 13 E 20	
COLORI	
	BIANCO
	AVORIO
	NERO
	GRIGIO
	ALLUMINIO
	MARRONE
	FRASSINO
	FAGGIO
	ABETE
	ROVERE
	ROVERE SBIANCATO
	CILIEGIO
	WENGHE'



VENTOSE GOMMA TRASPARENTE				
ARTICOLO	A	B	C	D
3310.10.99	15	6,5	10	7
3310.11.99	20	6,5	14	9
3310.20.99	30	9,5	20	14

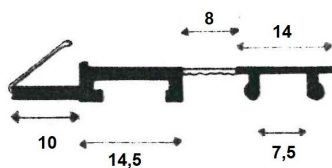


ORLI SOTTOVITI NYLON NEUTRO CON BORDO				
ARTICOLO	A	B	C	D
848	12	4	5	6



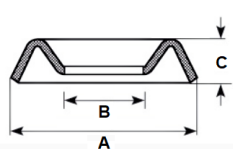
ORLI SOTTOVITI NYLON NEUTRO			
ARTICOLO	A	B	C
849	14	4,5	1,5

MINUTERIA



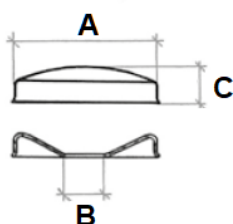
PROFILO IN PLASTICA PER BATTUTA ANTE

ARTICOLO	COLORE	L	
H1.092BI	BIANCO	MM 2600	
H1.092NO	NOCE	MM 2600	
H1.092NE	NERO	MM 2600	



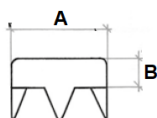
ORLI SOTTOVITI OTTONE

ARTICOLO	A	B	C
10585OL10	10	3	2
10585OL12	12	4	2
10585OL14	14	4,5	2
10585OL16	16	5,5	2,5



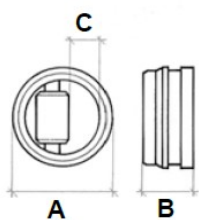
BORCHIE COPRIVITE OTTONE

ARTICOLO	COLORE	A	B	C
040066	OTTONE	18	5	5
140066	NICHELATO	18	5	5



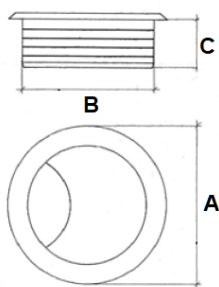
COPRIDADI FERRO CON CHIODI

ARTICOLO	FINITURA	B	C
020117	OTTONATI	18	5
130117	NICHELATI	18	5



BOCCOLE OTTONE TORNITO CON RULLO

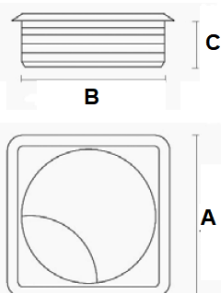
ARTICOLO	A	B	C
010131	16	8	5,5
020131	19	8	7,5



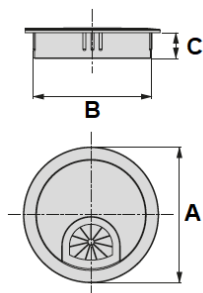
PASSACAVI IN PLASTICA TONDI PLASTICA

ART	COLORE	A	B	C
010960	BIANCO	72	60	22
110960	MARRONE	72	60	22
210960	NERO	72	60	22
930960	NICHEL	72	60	22
010962	BIANCO	93	80	22
210960	NERO	93	80	22
930960	NICHEL	93	80	22

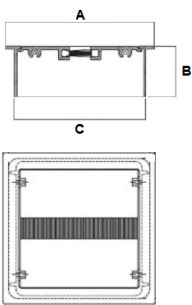
PASSACAVI



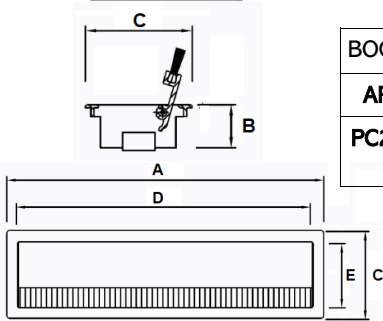
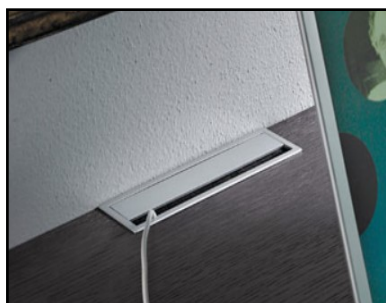
PASSACAVI IN PLASTICA QUADRI PLASTICA				
ART	COLORE	A	B	C
010961	BIANCO	71,5	60	22
210961	NERO	71,5	60	22
930961	NICHEL	71,5	60	22
010963	BIANCO	92	80	22
210963	NERO	92	80	22
930963	NICHEL	92	80	22



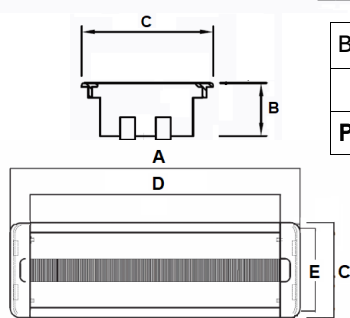
BOCCHETTE PASSACAVI TONDI ZAMA				
ARTICOLO	COLORE	A	B	C
5006764	CROMO SAT	68,5	60	13



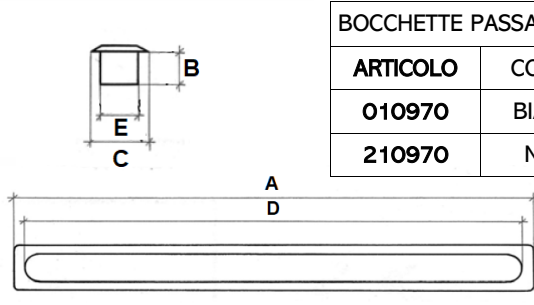
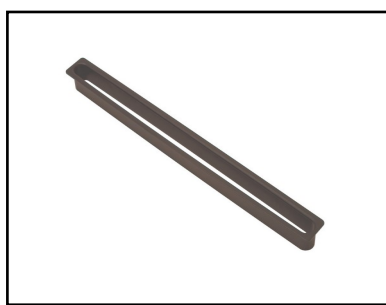
BOCCHETTE PASSACAVI QUADRE ZAMA				
ARTICOLO	COLORE	A	B	C
PC2000Z78	CROMO SAT	80	25	74



BOCCHETTE PASSACAVI RETTANGOLARI ZAMA						
ARTICOLO	COLORE	A	B	C	D	E
PC2000Z180	CROMO SAT	180	20	49,5	174	45



BOCCHETTE PASSACAVI RETTANGOLARI ZAMA						
ARTICOLO	COLORE	A	B	C	D	E
PC2007I220	CROMO SAT	220	20	95	215	91



BOCCHETTE PASSACARTA IN PLASTICA						
ARTICOLO	COLORE	A	B	C	D	E
010970	BIANCO	450	24	40	440	30
210970	NERO	450	24	40	440	30